



# Missa mundi

- Neufassung -

## Kyrie

Josef Lammerz, \*1930

Vorsänger  
Gemeinde

V G

Ky - ri - e e - le - i - son, Ky - ri - e e - le - i - son.

Manual

Pedal

Detailed description: This system contains the beginning of the Kyrie. It features a vocal line for the 'Vorsänger' (Soloist) and 'Gemeinde' (Congregation) in a soprano clef. The lyrics are 'Ky - ri - e e - le - i - son, Ky - ri - e e - le - i - son.' Above the vocal line, there are two notes labeled 'V' and 'G'. Below the vocal line, there are two staves for piano accompaniment: 'Manual' (treble and bass clefs) and 'Pedal' (bass clef). The music is in 4/4 time and begins with a key signature of one flat (B-flat).

2

S.  
A.

T.

B.

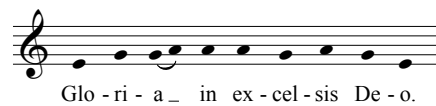
Man.

Ped.

*f* Chri - ste, Chri - ste,  
*f* Chri - ste, Chri - ste,  
*f* Chri - ste, Chri - ste,

Detailed description: This system continues the vocal parts and piano accompaniment. It features three vocal staves: Soprano (S.), Alto (A.), and Bass (B.). The lyrics are 'Chri - ste, Chri - ste, Chri - ste, Chri - ste, Chri - ste, Chri - ste,'. The dynamics are marked with a forte 'f' for each vocal line. Below the vocal staves, there are two staves for piano accompaniment: 'Man.' (treble and bass clefs) and 'Ped.' (bass clef). The music is in 4/4 time and continues with the same key signature of one flat. The piano accompaniment features a rhythmic pattern of eighth notes in the right hand and a more active bass line in the left hand.

# Gloria



Vorsänger  
Gemeinde

V G

Et in ter - ra pax ho - mi - ni - bus bo - nae vo - lun - ta - tis. Lau - da - mus te.

Manual

Pedal

V:  
G:

V G V 2

Be - ne - di - ci - mus te. Ad - o - ra - mus te. Glo - ri - fi - ca - mus te.

S.  
A.

T.

B.

Man.

Ped.

Solo-Tromp. 8'

*p*

3

3

# Credo



Vorsänger  
Gemeinde

V

Pa - trem o-mni-po-ten-tem, fa-cto-rem cae-li et ter-rae, vi-si-bi-li-um o - mni-um

Manual

V.  
G.

G

et in - vi - si - bi - li - um. Et in u - num Do - mi - num Je - sum Chri - stum, Fi - li - um

Man.

V.  
G.

V

De - i u - ni - ge - ni - tum, et ex Pa - tre na - tum an - te o - mni - a sae - cu - la.

Man.

2

S.  
A.

*f*

De - um de De - o, lu - men de lu - mi - ne,

T.

*f*

De - um de De - o, lu - men de lu - mi - ne,

B.

*f*

De - um de De - o, lu - men de lu - mi - ne,

Man.

*f*

Ped.

# Sanctus

Vorsänger  
Gemeinde

V G

San - ctus, — San - ctus, — San - ctus Do - mi - nus De - us Sa - ba - oth.

Manual

Pedal

2

S.  
A.

*mf* Ple - ni sunt cae - li, ple - ni sunt cae - li et

T.

*mf* Ple - ni sunt cae - li,

B.

*mf* Ple - ni sunt cae - li et ter - ra,

Man.

*mf*

Ped.

# Agnus Dei

Vorsänger  
Gemeinde

V G

A - gnus De - i, qui tol - lis pec - ca - ta mun - di: mi - se - re - re no - bis.

Manual

Pedal

2

S.  
A.

T.

B.

Man.

Ped.

*f*

*f*

*f*

*f*

A - gnus De - i, qui tol - lis pec - ca - ta

A - gnus De - i, qui tol - lis pec - ca - ta

A - gnus De - i, qui tol - lis pec - ca - ta

A - gnus De - i, qui tol - lis pec - ca - ta